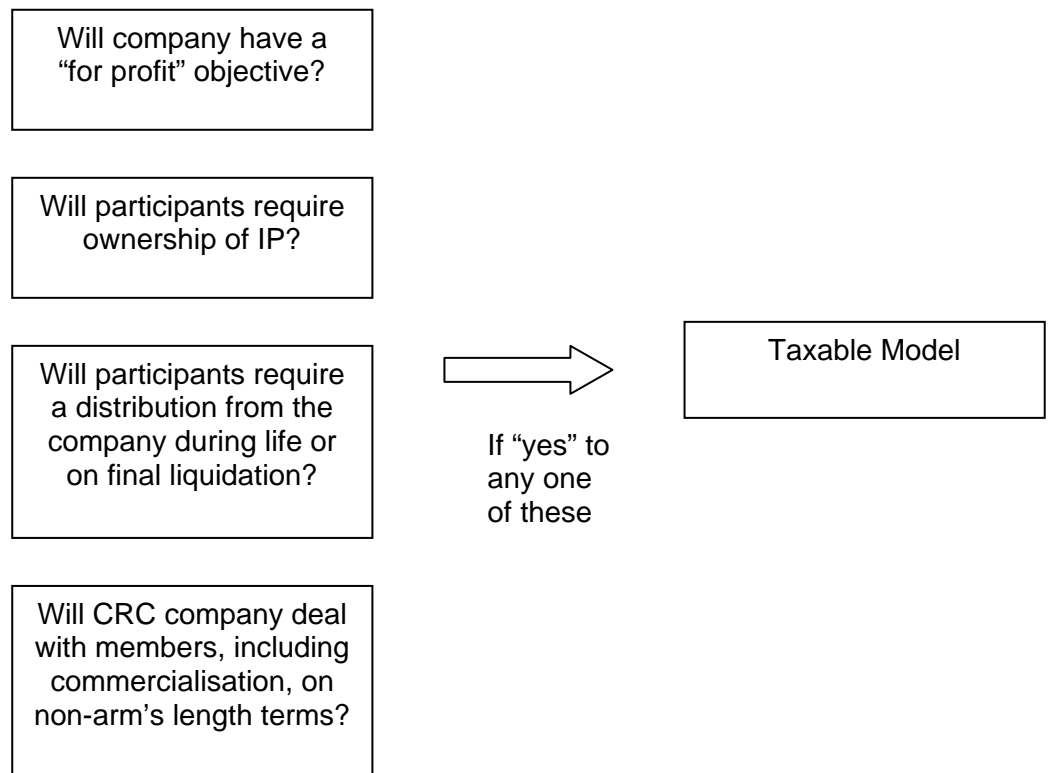
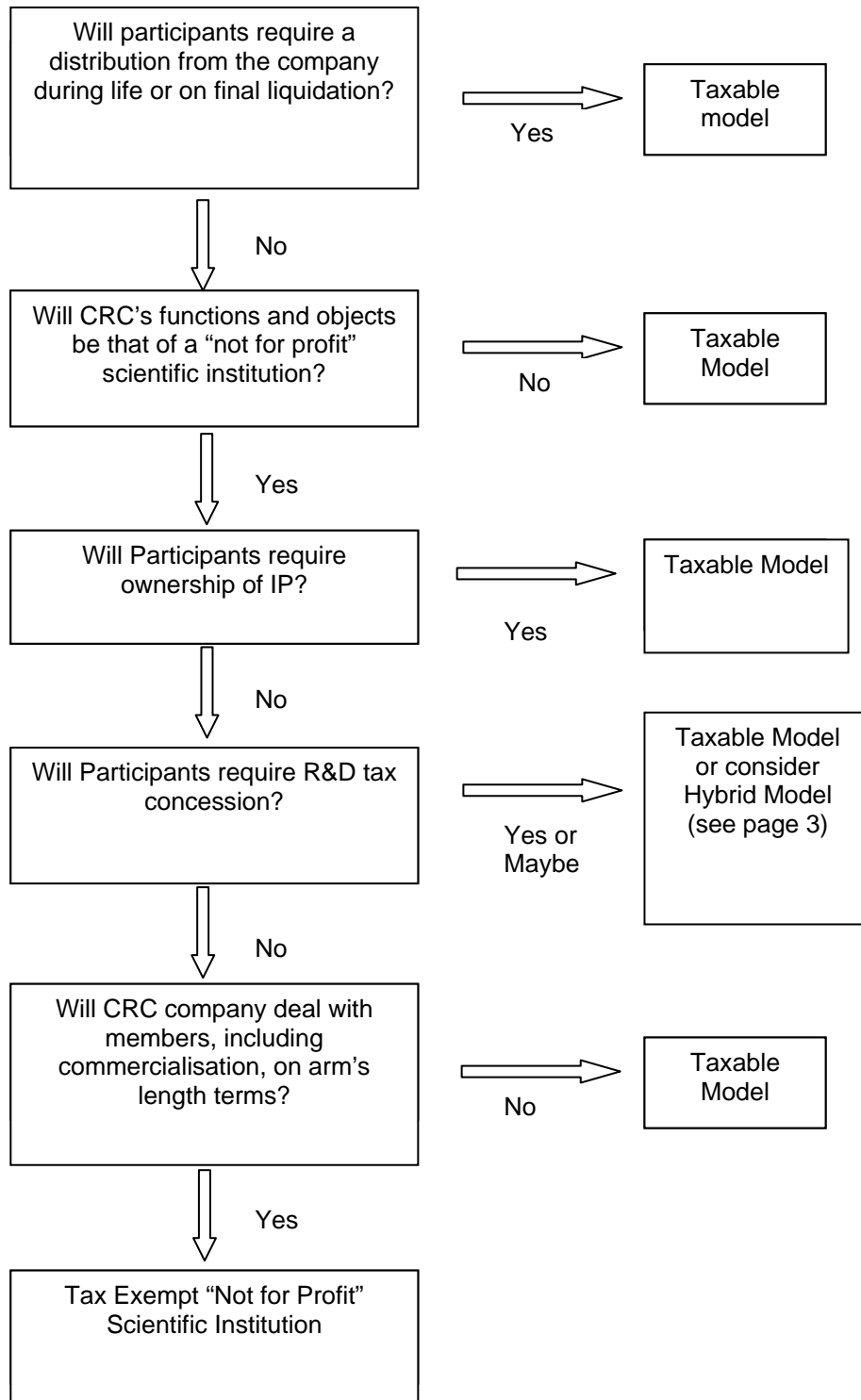


CRC ESTABLISHMENT DECISION ROUTE

TAXABLE MODEL



TAX EXEMPT MODEL¹



¹ This is a cumulative list of requirements that has in principle been approved by the ATO.

HYBRID MODEL - Tax Exempt CRC Company co-exists whilst Participants access R&D Tax Concession

CAUTION: This model has not been approved by the ATO and would need to be considered by individual CRCs on a case by case basis by way of a Private Ruling from the ATO. Because this model has not been approved by the ATO it is not reflected in the Template Documentation and does not constitute legal or taxation advice.

